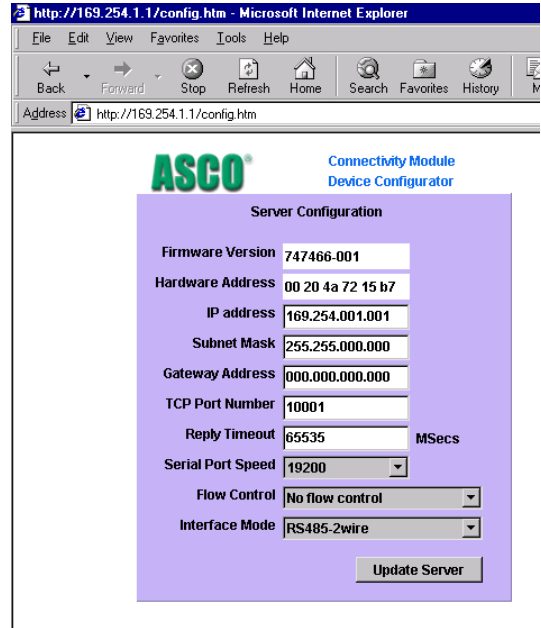


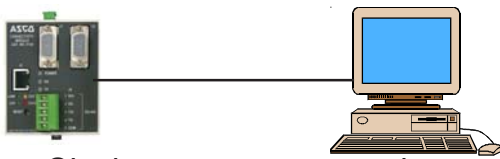


All Firetrol® Fire Pump Controllers with the Mark II operating system are compatible with the ASCO® 5150 Ethernet Connectivity Module. The 5150 module allows users to remotely monitor the status of a fire pump controller, either connected to a single computer or over a network.

Designed with a user friendly configuration interface, administrators can customize the module to fit their network parameters.



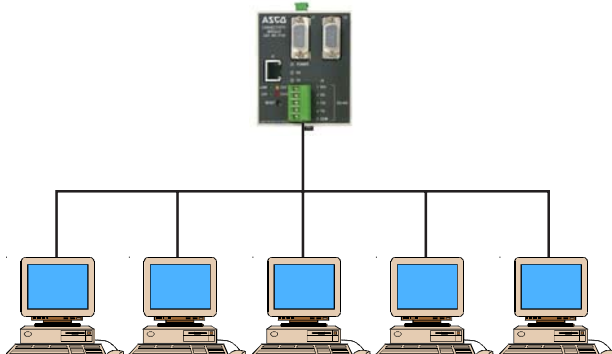
5150 Configuration Interface.



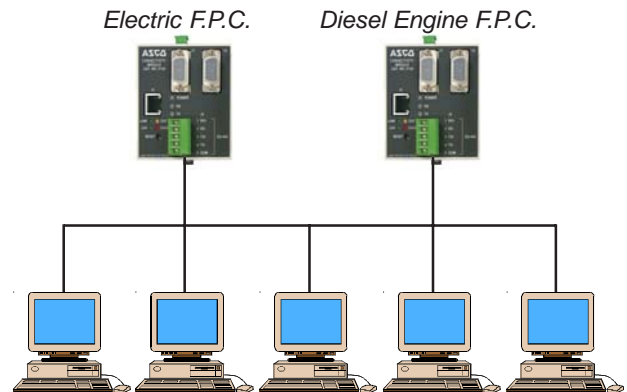
Single computer connection.

This flexibility in configuring the modules allows multiple controllers to be accessed from the same network.

The connectivity module is connected via a CAT5 ethernet cable with RJ45 type connectors. When networked, the 5150 can accommodate up to 5 simultaneous connections.



Single networked connection.



Networked, multiple controller connection.

Once installation is complete, the controller information can be accessed from your web browser by simply typing in the IP address assigned to the 5150 Module installed in each controller.

For more information on this, or any other Firetrol brand products, please contact your local representative or the Firetrol factory.

Sample Electric Fire Pump Controller Status Screen¹.

Sample Diesel Engine Fire Pump Controller Status Screen¹.

¹ Due to software enhancements, actual screens may vary from those shown here.

